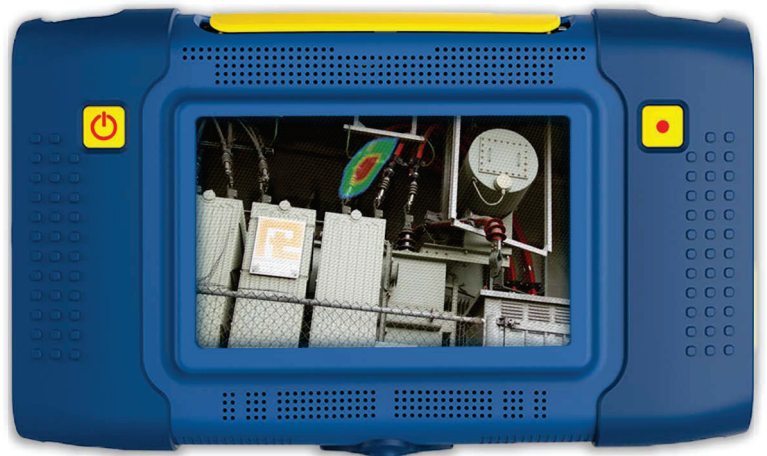




SONAVU™



SonaVu™ Ultrasonic Acoustic Imaging Camera

SDT International sa-nv • Bd de l'Humanité 415 • B-1190 Brussels (Belgium) • Tel: +32(0)2 332 32 25 • email: info@sdtultrasound.com

SDT North America • 7677 County Rd 2, Cobourg, ON • Phone: 1-800-667-5325 | 1-905-377-1313 • email: hearmore@sdtultrasound.com

www.sonavu.com | www.sdtultrasound.com



Technical Data

SonaVu™ Ultrasonic Acoustic Imaging Camera for Compressed Air Leak Management



SonaVu™ is a multi-frequency acoustic imaging camera that blends visual and auditory senses to bring compressed air leaks into focus.

Compressed air leaks account for as much as 35-40% of total demand. That's 35-40% of your electricity wasted for nothing.

The single highest cost in operating your compressed air system is electricity! NOT maintenance; NOT Capex; 75% of your compressor cost is the energy to run it.

SonaVu™ is a multi-frequency acoustic camera that takes airborne ultrasound inspection to a new level. Equipped with 112 highly sensitive sonic sensors and a precision optical camera, SonaVu™ brings the power of super-human hearing to focus on its vibrant, color touch screen. It unlocks limitless applications for asset reliability, energy conservation, and safety including compressed air leak management, electrical asset reliability, tightness control of large volumes, and much more.

A simple leak detection procedure consists of picking up the SonaVu™ and powering it on. Connect the high-quality noise attenuating headphones so you can hear what SonaVu™ hears. Then simply point the acoustic sensor array towards any compressed air lines. Listen for the characteristic hissing of the air leaks in the headphones and watch the color display light up with the precise location of the leak.

All controls are found on the SonaVu™ touch screen.

1. Set the distance:

- Choose near range (<5m) or far range (>5m) or auto range to let SonaVu™ decide.

2. Set the frequency:

- For compressed air leaks choose 25-40kHz

3. Set the gain

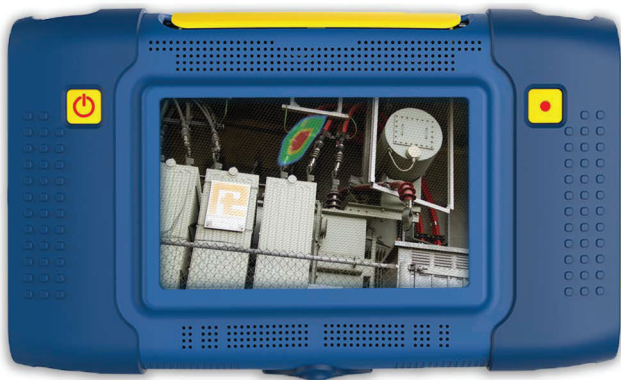
- Difference between min/max sound pressure.

Each air leak found must be documented to follow up the repair. Leaks are documented in pictures. Choose to create a still image (camera icon) or a video (video icon) for generating leak survey reports. SonaVu™ saves the leak image in either photo or video format. Download your leak survey and produce actionable reports that actually get those compressed air leaks fixed.



Technical Data

SonaVu™ Ultrasonic Acoustic Imaging Camera for Electrical Asset Reliability



Partial Discharge Testing with an Acoustic Imaging Camera | SonaVu™

Electrical discharge is more common than we'd like to believe; even in new installations. Unreliable electric power systems not only cost millions of dollars in downtime and repairs, but they also have the potential to maim and kill.

Any discussion about risk must include health and safety. But it should not ignore asset reliability. One certainty is that safety and reliability risks are both linked to unscheduled downtime, costly legal exercises, and ultimately, lost profit. A perfect solution identifies safety and reliability as one and the same and marginalizes their impact on the other three.

Ultrasound is the best technology for reducing the risk of electrical arc flash exposure while ensuring equipment reliability. It does this by detecting defects which, when left to deteriorate, could lead to an arc flash event. This doesn't suggest that ultrasound removes the need for personal protective equipment and other safety measures.

The long-distance sonic imagery capabilities of the SonaVu™ acoustic imaging camera make it an essential tool for inspecting electrical systems for partial discharge while maintaining electrical safety and reliability.

You will find activity in all types of high voltage power assets. From switchgear... to transformers... to overhead lines... and underground cables. Partial discharge causes degradation and failures. Experience shows that Partial discharge activity is a contributory factor in over 80% of disruptive substation failures. It is the most reliable indicator of the true condition of insulation in live assets.

The procedure for scanning is straightforward. Connect the noise attenuating headphones to the SonaVu™ and position the sensors towards potential sources. The ultrasound produced by partial discharge excites the sensors while their location is revealed on the display. Tap the icon to capture either a video or still image to place it into your inspection report. It's that easy!

Sources of ultrasound created by the presence of partial discharge are superimposed on the image allowing inspectors to intuitively pinpoint their location.



Technical Data

SonaVu™ Ultrasonic Acoustic Imaging Camera for Fugitive Emission Inspection



SonaVu™ is a multi-frequency acoustic imaging camera that blends visual and auditory senses to bring fugitive emissions, natural gas, and oil leaks into focus.

One problem facing refineries and oil and gas (O&G) plants is how to identify and eliminate sources of leakage into the atmosphere.

There are many sources of fugitive emissions within the O&G industry segments. Sadly, many sources are intentional or, let us say, part of the process; whether that process be manufacturing, refining, transporting, venting, flaring, and storage. However, accidental sources of fugitive emissions fall under the categories of "equipment leaks" and "accidents and equipment failures". It is within these categories where we discover the highest risk because the leaks can be both long-term or sudden and impactful.

Five sources of fugitive emissions:

1. Equipment Leaks;
2. Process Venting;
3. Evaporation Losses;
4. Disposal of Waste Gas Streams (venting/flaring);
5. Accidents and Equipment Failures;

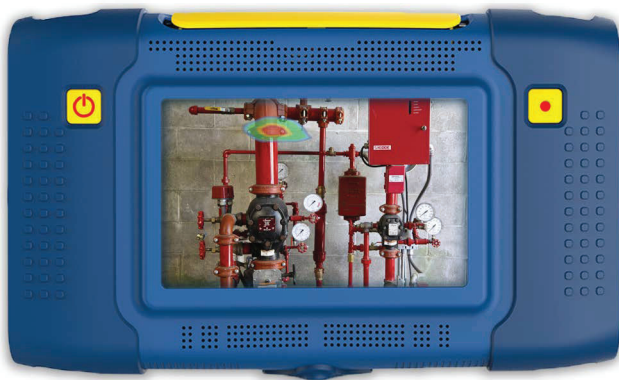
SonaVu™ from SDT Ultrasound Solutions, is a new technology that shows promise for the detection of fugitive emissions within the oil and gas and refining verticals. SonaVu™ is a multi-frequency acoustic imaging camera that blends visual and auditory senses to bring fugitive emissions into focus.

With SonaVu™ from SDT finding, documenting, and repairing fugitive emissions, natural gas, and oil leaks has never been easier. SonaVu™ brings the power of superhuman hearing to focus on its vibrant color screen. Most fugitive emissions remain inaudible and invisible to humans. Detection attempts are further stymied by the rumble and roar of the factory environment. But SonaVu™ is tuned to hear only the ultrasonic component created by turbulence at the leak site. At the same time, it remains impervious to the noise of production. Fugitive emission detection and management projects can be conducted at the height of production regardless of background noise.



Technical Data

SonaVu™ Ultrasonic Acoustic Imaging Camera for Dry Pipe Sprinkler Systems



SonaVu™ is the perfect companion for dry pipe sprinkler system inspections and fire safety service providers should consider offering this leak detection to their clients.

Fire sprinkler systems must be maintained and not classed as "run to failure". They are the most important fire and safety element in any strategic asset management plan.

Proper maintenance of dry pipe sprinkler systems is critical to ensure their reliability. Leaks are a major concern as pressure drops can trigger false alarms that cause unnecessary water damage. In nitrogen charged systems, the loss of gas is expensive. In compressed air charged systems the constant cycling of the compressor to satisfy the false demand of leaks is wasteful and contributes to undesirable greenhouse gas emissions, as well as wear and tear on the compressor.

Fire safety companies turn to ultrasound as a popular inspection method for detecting pressure leaks in dry pipe sprinkler systems. These instruments detect high frequency sound produced by the turbulence found at the leak source. As ultrasound is highly directional, identifying the location of a leak is easy. Detectors are not affected by other sounds. This allows for effective inspections even during noisy, peak production times.

Leaking dry pipe sprinkler systems can cause damage to property and assets even if there is no fire. System pressure drops may trip the supply valve. All measures possible to maintain a leak-free dry pipe sprinkler system are paramount as a poorly maintained dry pipe sprinkler system could be the cause of catastrophic fire damage, physical injury, and death.

Ultrasound works by hearing the turbulent flow prevalent at the leak site. As compressed air or nitrogen escapes through tiny orifices the air molecules are excited. You may be familiar with the hissing sound of air escaping through a compressed air line. This turbulence has peaks at 40kHz (ultrasonic) making ultrasound detectors the ideal instrument for finding leaks fast, in any environment.

SonaVu™ is a multi-frequency acoustic imaging camera that blends visual and auditory senses to faults that threaten the reliability and safety of dry pipe sprinkler systems. Its 112 highly sensitive sonic sensors work in concert with a precision optical camera. SonaVu™ brings the power of superhuman hearing to focus on its vibrant color screen.



Specifications

SonaVu™ Ultrasonic Acoustic Imaging Camera

SDT International sa-nv • Bd de l'Humanité 415 • B-1190 Brussels (Belgium) • Tel: +32(0)2 332 32 25 • email: info@sdtultrasound.com

SDT North America • 7677 County Rd 2, Cobourg, ON • Phone: 1-800-667-5325 | 1-905-377-1313 • email: hearmore@sdtultrasound.com

www.sonavu.com | www.sdtultrasound.com

Hardware

- 112 Digital MEMS Microphones
- Sample Rate 96,000 Sample per Second
- 5-inch Touch Screen
- Including Distance Range Sensor
- Adjustable Lighting

Firmware

- Real-Time Visualization of Sound
- Desired Frequency Range Filtering
- Image Averaging Function
- Video and Image Storage
- Improved Accuracy according to the Distance

Performance

Sensor (Microphone)	112 Channel Digital MEMS
Effective Frequency Range	2 kHz to 48 kHz
Microphone Sensitivity	-41 dBFS
Signal-to-Noise Ratio	66 dB(A)
Camera Frame Speed	25 FPS
Detection Distance	0.3m to 50m (11.8 inches to 164 feet)
Display Type	5" Color LCD + Touch Control
Battery Life	4 Hours
Product Dimensions	237mm x 146mm x 56mm (9.3in x 5.7in x 2.2in)
Product Weight	1.2 kg (2.64 lb)
Operating Temperature	-20°C to 50°C (-4°F to 122°F)
Brand	SonaVu™ y

All product, product specifications, and data are subject to change without notice to improve reliability, function, design, and customer experience.