

Digital Caliper **ABSOLUTE SERIES** Optical Glass Measuring System **IP54**

- ✓ Metrology Absolute Series digital caliper features absolute sensor measuring system, for fast and reliable measurement, no need to repeatedly reset zeros, even after power down or replacing battery, the original data stays the same, also no induction speed limit.
- ✓ SPC port allows data import through USB. No software required. Data can be transfer directly to Excel.



▼ FEATURE ▼

IP54 water and dust protection (IEC 60529)
For minor humidity and dusty environments

Absolute sensor measuring system
Limitless induction speed

Hardened Stainless Steel
Hardness HRC 48-52, including fine adjustment roller

4 functional buttons
Slide to turn on, auto power down

ABS/INC & MM/IN conversion

3V lithium battery (CR2032),
one year battery life

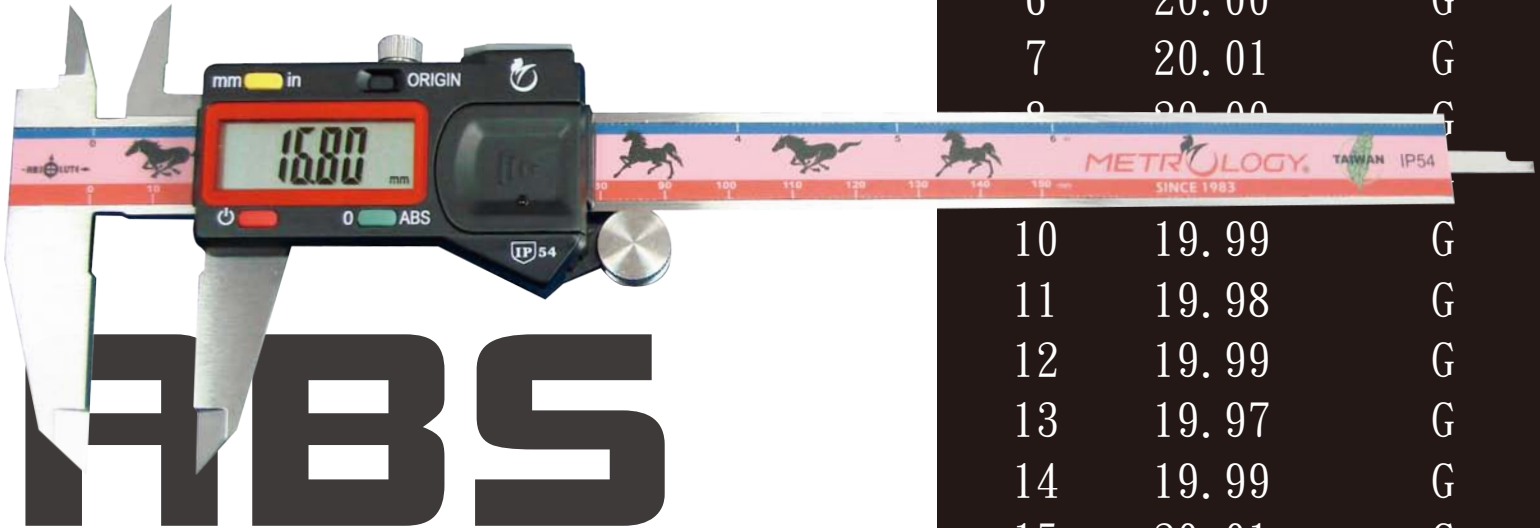
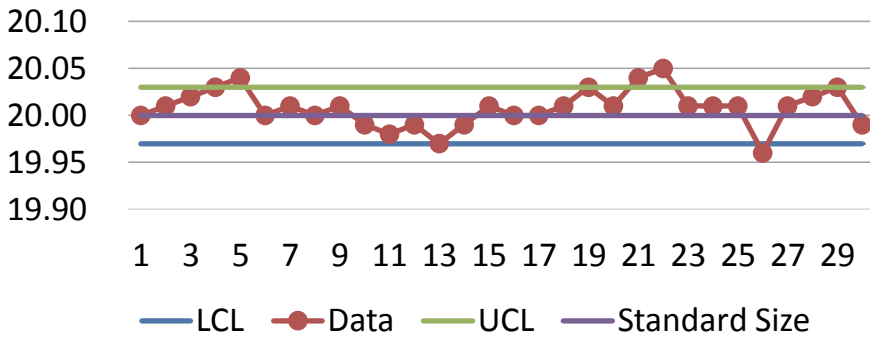
Factory certified,
JCC calibration certificate included



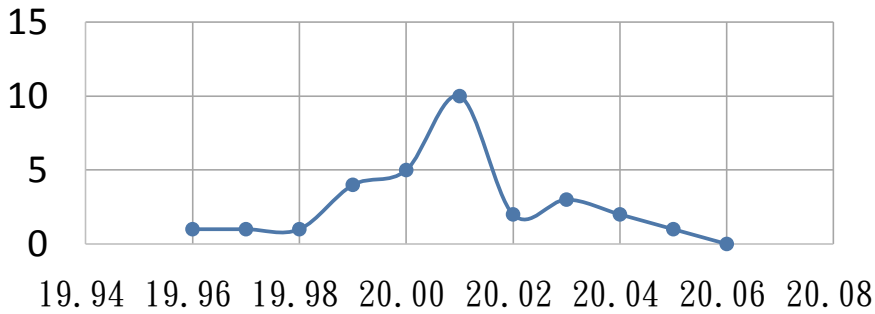
Model No.	Measuring Range	Resolution	Accuracy (MPE)
EC-9001AB	0-150mm/6"	0.01mm/0.0005"	0.02mm/0.001"
EC-9002AB	0-200mm/8"		0.03mm/0.0015"
EC-9003AB	0-300mm/12"		0.04mm/0.0015"

Option accessory: SPC data output cable (DO-ABW)

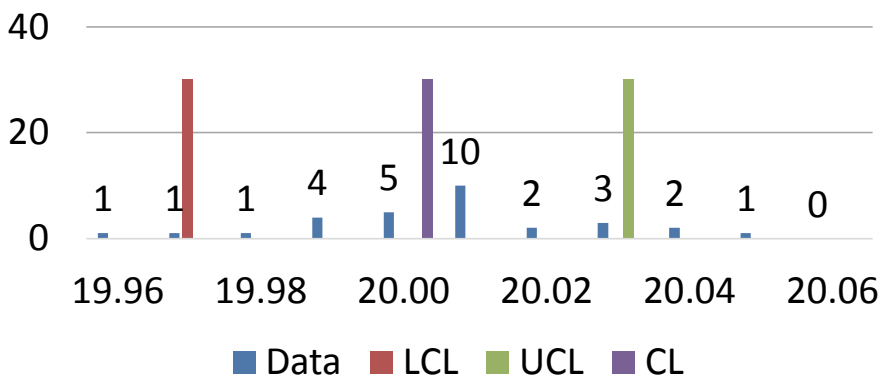
line chart



Run Chart



Histogram



Number	Value	Conclusion
1	20.00	G
2	20.01	G
3	20.02	G
4	20.03	G
5	20.04	+
6	20.00	G
7	20.01	G
8	20.00	G
9	19.99	G
10	19.99	G
11	19.98	G
12	19.99	G
13	19.97	G
14	19.99	G
15	20.01	G
16	20.00	G
17	20.00	G
18	20.01	G
19	20.03	G
20	20.01	G
21	20.04	+
22	20.05	+
23	20.01	G
24	20.01	G
25	20.01	G
26	19.96	-
27	20.01	G
28	20.02	G
29	20.03	G
30	19.99	G